



2020 WATERLODGE Oasis 5

“RIVER EDEN”

£160,000



Overall Length	12.0m
Width	5.0m
Internal Floor Area	38m2
Roof Terrace Area	20m2



"River Eden," a 2020 Waterlodge Oasis Five, presents a great opportunity for those seeking a luxurious waterfront lifestyle. At just 4 years old, this exquisite Waterlodge is in excellent condition and ready to offer a serene and sophisticated experience on the water.

Purchasing "River Eden" now offers a unique chance to acquire a premium craft at a discount compared to the cost of a new 2024 Waterlodge Oasis Five build.

"River Eden" can be transported to a destination of your choice. Waterlodge UK is available to provide quotes for relocation to any marina or location that suits your needs.

Don't miss out on this opportunity to own "River Eden" and immerse yourself in the ultimate waterfront lifestyle.

Contact us today for further details and to arrange a viewing.

CONSTRUCTION

Galvanised Pontoon frame

Polyethylene box floats with internal waste and water tanks

External ANTHRACITE cladding

Electric heating/hot water system

ACCOMMODATION

Two bedroom layout with one bathroom and fitted kitchen.

MASTER BEDROOM

Master bedroom double bed

Additional floor to ceiling window.

Patio door to rear deck

BATHROOM

Toilet

White vanity unit with sink

Sliding shower door enclosure

Bathroom towel rail

SECOND BEDROOM

Additional floor to ceiling window

KITCHEN

IKEA BLACK AND WHITE units with ORRNAS handles

IKEA KARBY OAK counter worktop

VALBILDAD electric 2 burner induction hob

Undercounter integrated fridge / freezer

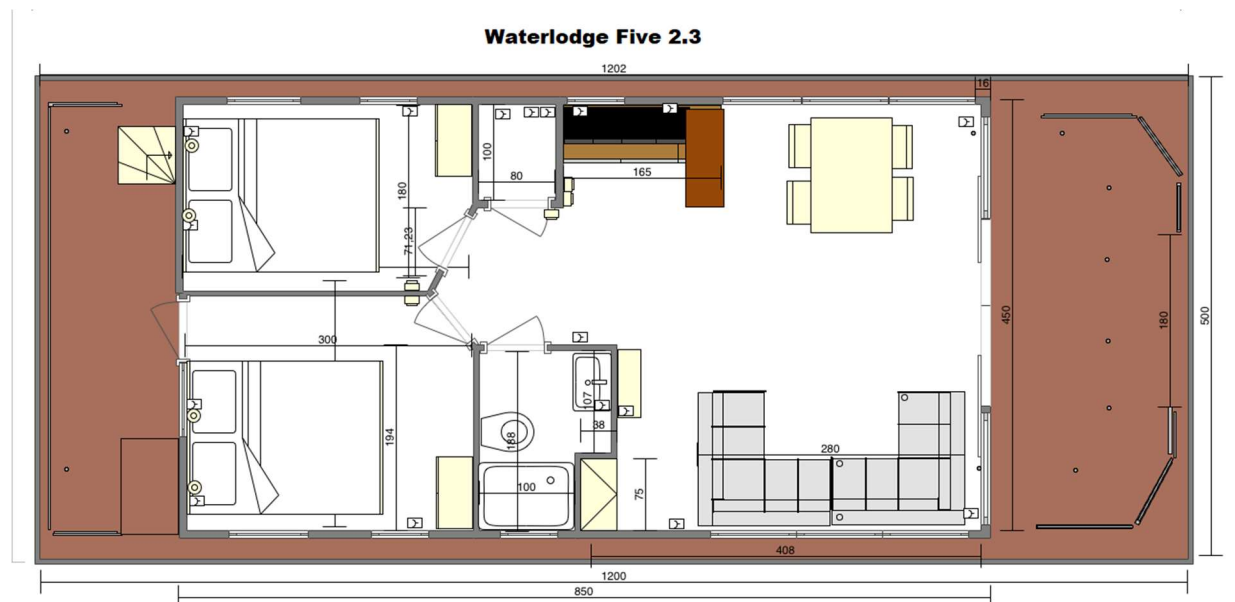
LOUNGE

VOX RIGGIO NATURAL OAK flooring

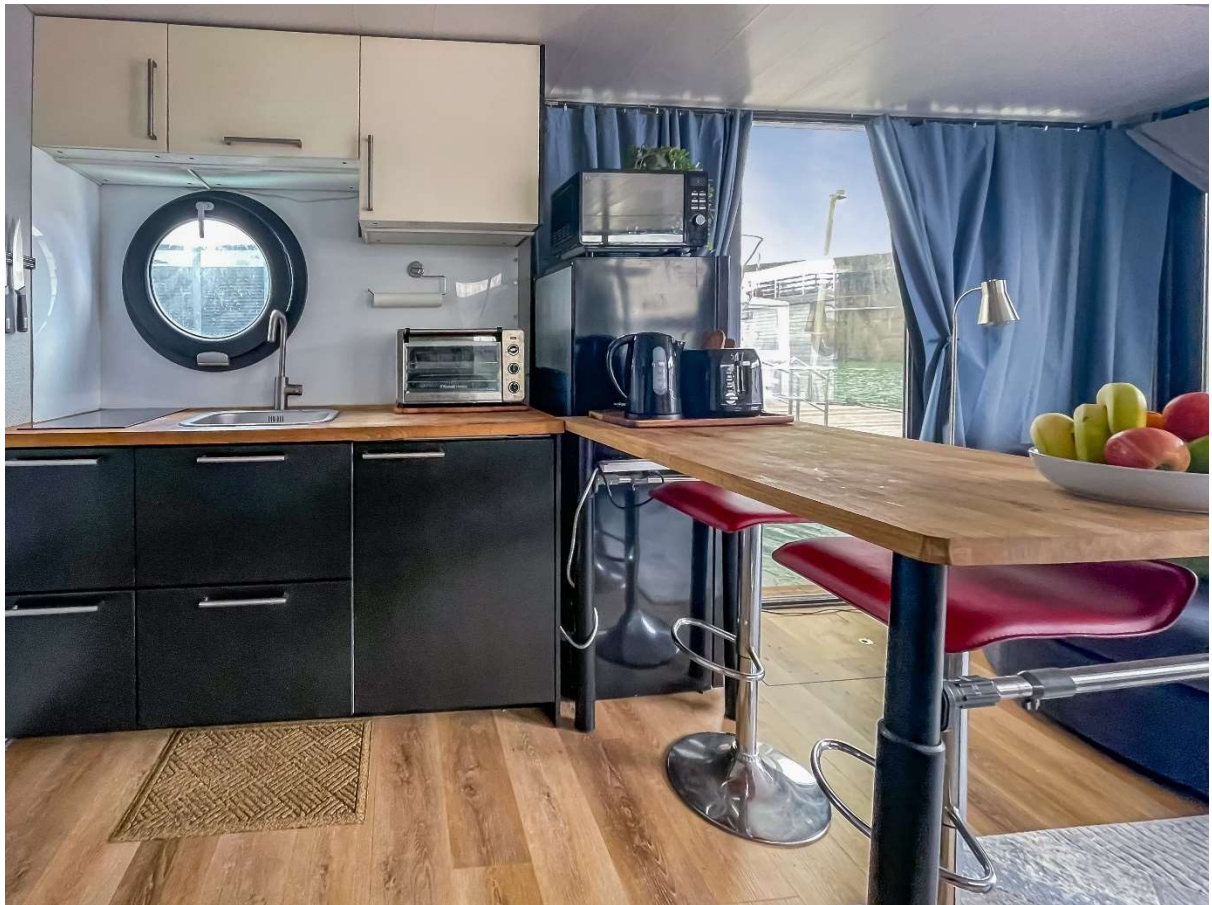
Sliding patio doors to decking area

6 full height windows

Curtains for patio windows















Contact info

Middle Barn, Efford Park, Milford Rd, Lymington, Hampshire SO41 0JD

01590 630655

info@waterlodge.co.uk

www.waterlodge.co.uk

