

**waterlodge**  
live the alternative

## **2021 WATERLODGE OASIS 6**

**“SURFSIDE”**

**£175,000**



<b>Overall Length</b>	<b>15.0m</b>
<b>Width</b>	<b>5m</b>
<b>Internal Floor Area</b>	<b>50 sq m</b>
<b>Roof Terrace Area</b>	<b>30 sq m</b>

"Surfside", a 2021 Waterlodge Oasis Six, presents a rare opportunity for those seeking a luxurious waterfront lifestyle. She boasts desirable features such as underfloor heating and a roof terrace, perfect for soaking in the sun and enjoying breathtaking views. Located in the esteemed Waterlodge village on the East Jetty of Brighton Marina, "Surfside" enjoys a prime location in one of Brighton's most sought-after areas. Whether you're looking for a tranquil retreat or an exciting hub of activity, this location offers the best of both worlds.

## **CONSTRUCTION**

Galvanised Pontoon frame

Polyethylene box floats with internal waste and water tanks

External Anthracite cladding

Electric hot water system

Infra red Underfloor heating

## **ACCOMMODATION**

Two bedroom layout with two bathrooms and a fitted kitchen.

## **MASTER BEDROOM**

Bedroom with Ottoman double bed and wardrobe

Two additional floor to ceiling windows upgrade.

Wall mounted bedroom reading lights upgrade

Patio door to rear deck

## **EN SUITE BATHROOM**

Toilet

White vanity unit with sink.

Sliding shower door enclosure

Electric bathroom towel rail

Caribbean Blue HPL wall finish

## **BEDROOM TWO**

Bedroom with Ottoman double bed and wardrobe

One additional floor to ceiling window upgrade.

Wall mounted bedroom reading lights upgrade

## **MAIN BATHROOM**

Toilet

White vanity unit with sink.

Sliding shower door enclosure

Electric bathroom towel rail

Tropical Blue HPL wall finish

## **KITCHEN**

VOXTORP DARK GREY units

LAXNE WHITE MINERAL worktops

VALBILDAD electric 2 burner induction hob

Undercounter integrated fridge and freezer

Breakfast Bar with overhead light

## **LOUNGE**

VOX RIGGIO WHITE OAK flooring

Sliding patio doors to decking area

6 full height windows

Curtains for patio windows in Grey

## **ROOF TERRACE**

316 marine grade stainless steel railings

Straight staircase leading to upper deck roof terrace

## Optional extras as fitted

316 marine grade stainless steel Roof terrace with straight stairs

Additional Bedroom Windows x 3

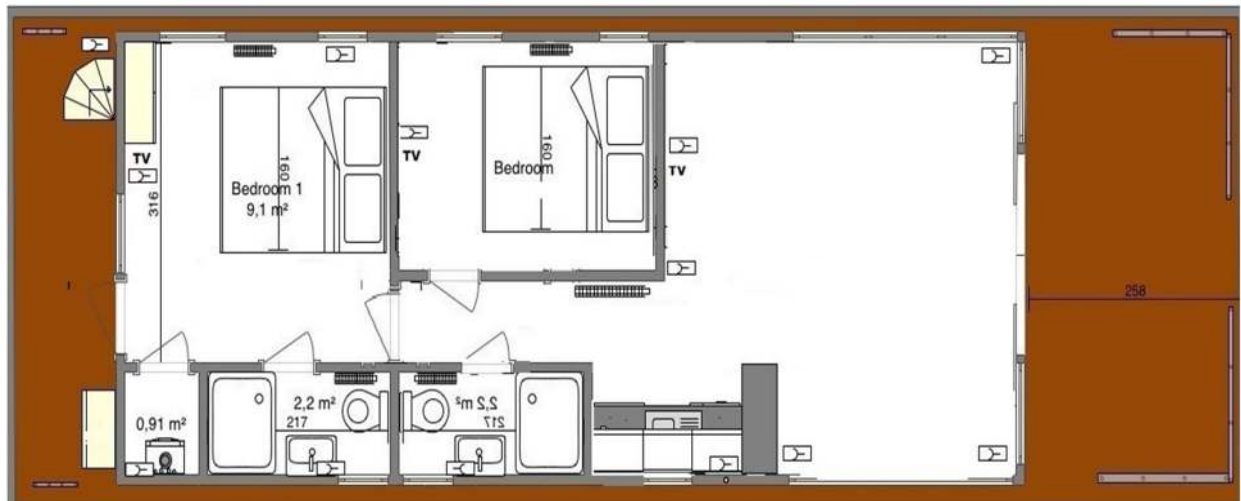
Bedroom furnishing pack that includes Ottoman double beds and wardrobes in both bedrooms

Wall mounted reading lights in both bedrooms

Built in Combi microwave/grill

Breakfast Bar with overhead light

Curtains for patio doors in grey











BUYER PACKAGE ELIGIBLE



**Waterlodge UK**

**South Barn, Efford Park, Milford Rd, Lymington, Hampshire  
SO41 0JD**

**01590 630655**

[info@waterlodge.co.uk](mailto:info@waterlodge.co.uk)

[www.waterlodge.co.uk](http://www.waterlodge.co.uk)